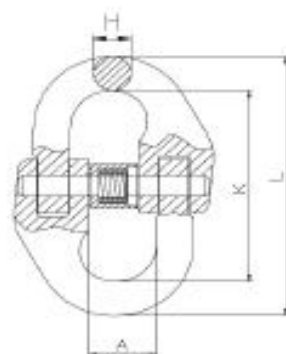


ESLABON DE UNION – EUROPEAN TYPE CONNECTING LINK – Hammerlock



Ø	WLL (TN)	A+1.5	L+2.5	K+2	H+1
6 mm	1,12	15	58	42	7
7/8 mm	2	18	79.5	62.5	8.5
10 mm	3.15	25	93	68	10.8
13 mm	5.3	29	117	87	15
16 mm	8	34.5	148	108.4	19.8